




Title : Pleora eBus installation manual  
Document :  
Issue : 1.0.0  
Classification : Public

Page : 1  
Date : 01/03/2022

Title : Pleora eBus installation manual  
Document number :  
Issue : 1.0.0  
Classification : Public  
Customer :  
Date : 01/03/2022

### Revision history


Issue	Date	Para	Details
1.0.0	22/10/2021		Initial release

	Title : Pleora eBus installation manual Document : Issue : 1.0.0 Classification : Public	Page : 2 Date : 01/03/2022
---	---	-------------------------------

## Table of contents

- 1. Installation for Windows ..... 3
- 2. Installation for Ubuntu 16.04 LTS and 18.04 LTS..... 8



	Title : Pleora eBus installation manual Document : Issue : 1.0.0 Classification : Public	Page : 3 Date : 01/03/2022
---	---	-------------------------------

## 1. Installation for Windows

Start the eBus installer (eBUS Runtime 64-bit.6.2.5.5601.exe) that you downloaded from our website or with our software installers.

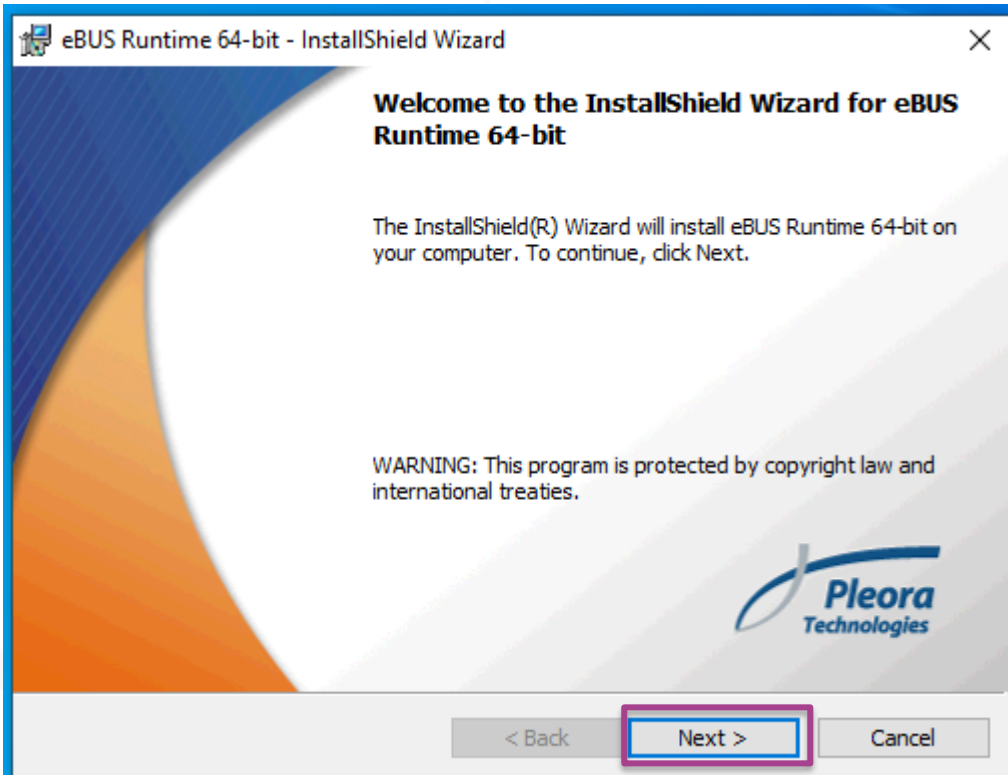



Fig. 1 : Installation welcome selection

Click on “Next”,

	Title : Pleora eBus installation manual Document : Issue : 1.0.0 Classification : Public	Page : 4 Date : 01/03/2022
---	---	-------------------------------

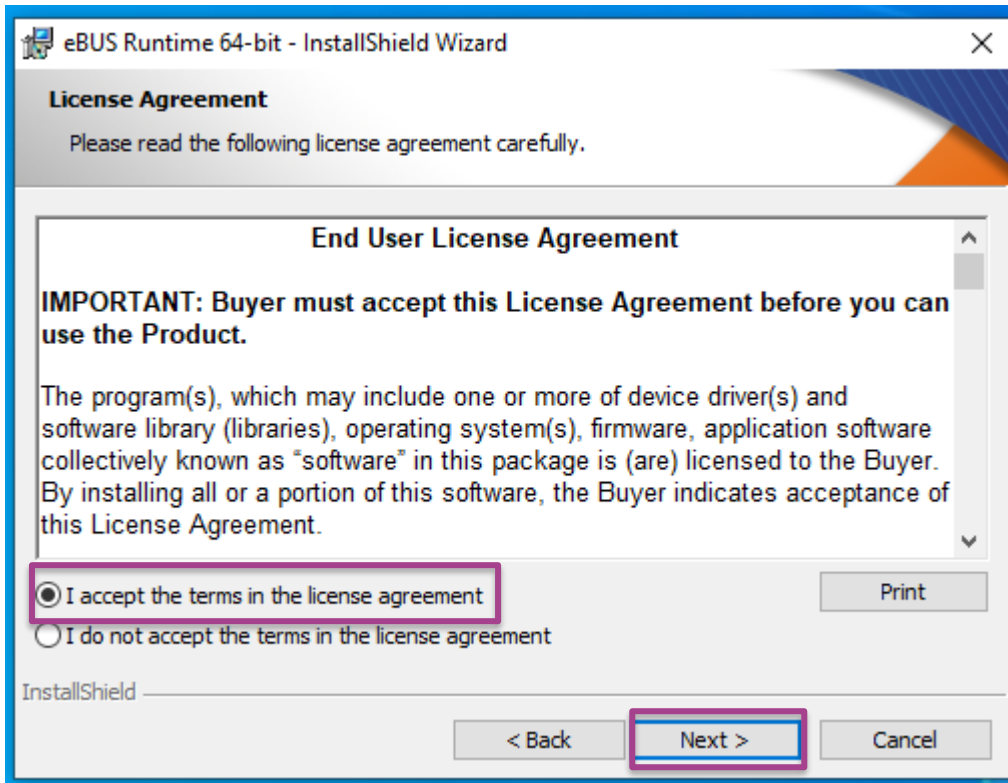



Fig. 2 : License agreement

Click on “I accept the terms in the license agreement” and then on “Next”,

	Title : Pleora eBus installation manual Document : Issue : 1.0.0 Classification : Public	Page : 5 Date : 01/03/2022
---	---	-------------------------------

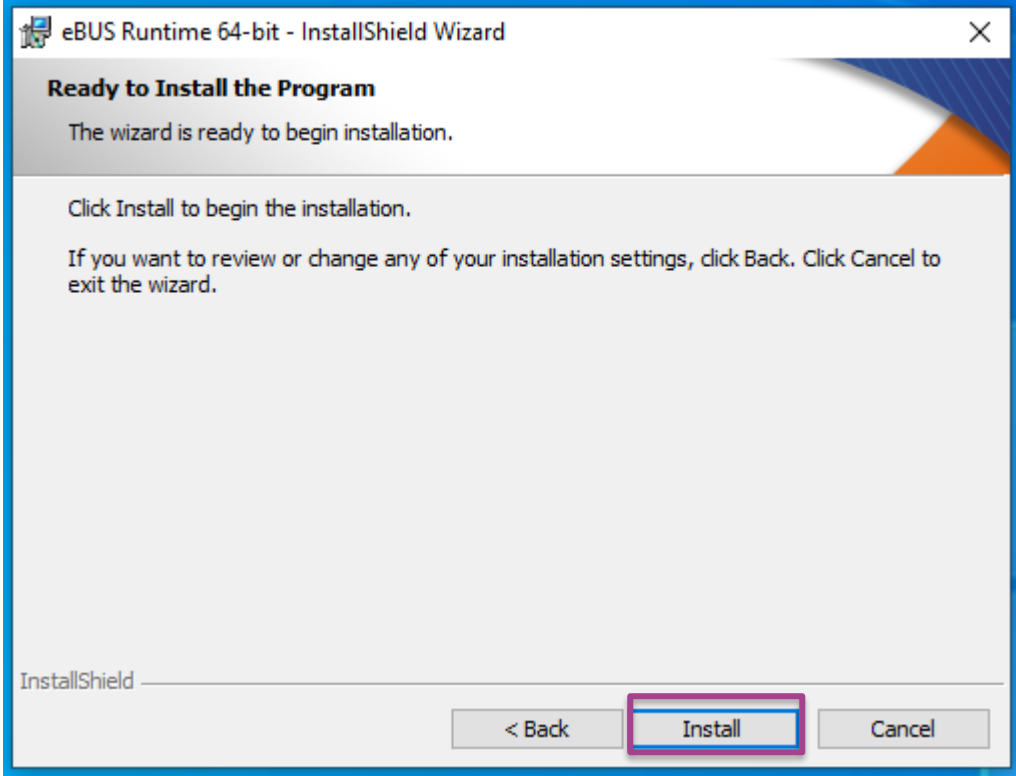



Fig. 3 : Start installation

Click on "Install",

	Title : Pleora eBus installation manual Document : Issue : 1.0.0 Classification : Public	Page : 6 Date : 01/03/2022
---	---	-------------------------------

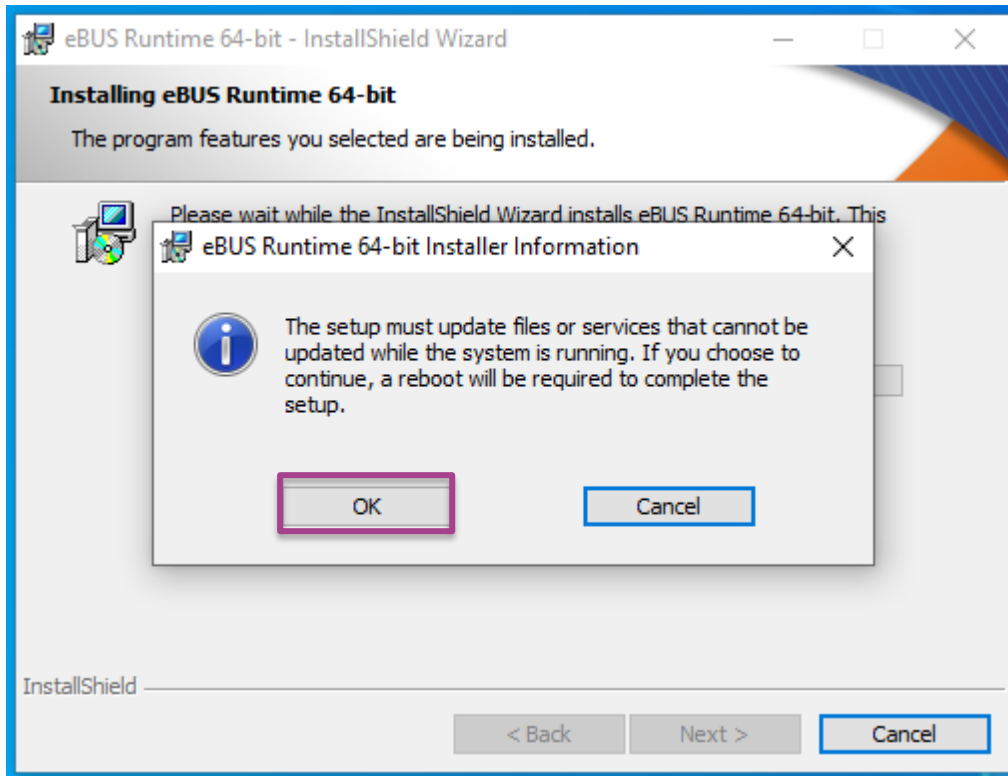



Fig. 4 : Installer information

Click on "Ok", and wait for end of installation.

	<p>Title : Pleora eBUS installation manual  Document :  Issue : 1.0.0  Classification : Public</p>	<p>Page : 7  Date : 01/03/2022</p>
---	--	--

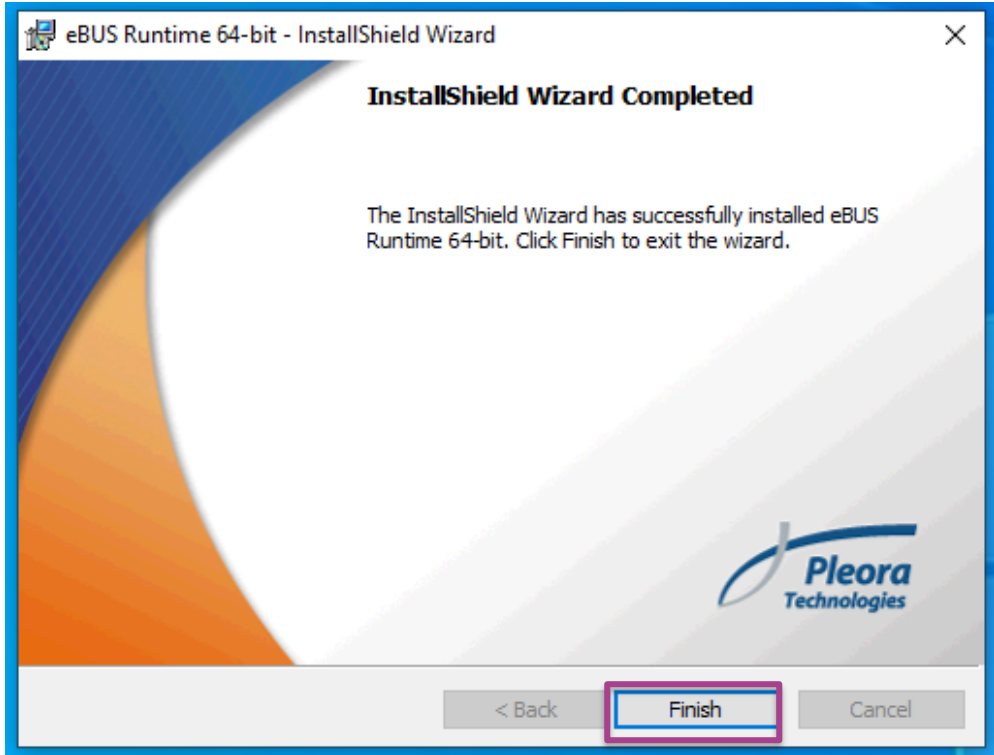
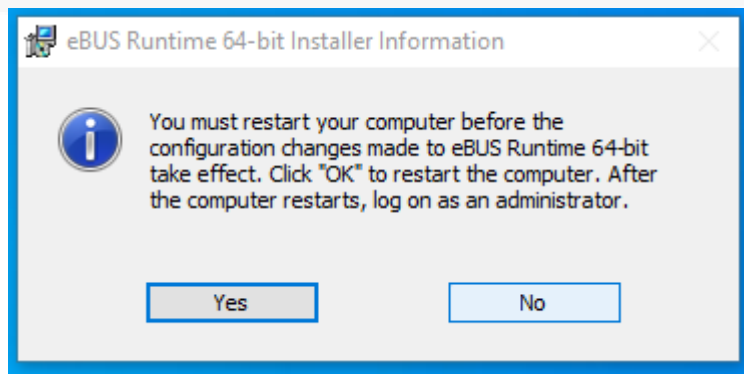



Fig. 5 : Finish section

Click on “Finish”,



The computer must be restarted, click on “Yes” to restart now or “No” to restart later.

	<p>Title : Pleora eBus installation manual  Document :  Issue : 1.0.0  Classification : Public</p>	<p>Page : 8  Date : 01/03/2022</p>
---	--	--

## 2. Installation for Ubuntu 16.04 LTS and 18.04 LTS

Start the eBus installer (eBUS\_SDK\_Ubuntu-18.04-x86\_64-6.2.5-5601.deb) that you downloaded from our website or with our software installers.



Click on “Install”, enter your password and wait for end of process.

Note: Disable DHCP if ethernet card is not connected to a switch.