	Title : EDT installation manual Document : Issue : 1.0.0 Classification : Public	Page : 1 Date : 17/11/2023
---	---	-------------------------------

Title : EDT installation manual
Document number :
Issue : 1.0.0
Classification : Public
Customer :
Date : 17/11/2023

Revision history

Issue	Date	Para	Details
1.0.0	22/09/2020		Initial release



	<p>Title : EDT installation manual Document : Issue : 1.0.0 Classification : Public</p>	<p>Page : 2 Date : 17/11/2023</p>
---	--	--

Table of contents

- 1. Installation for Windows 3
- 2. Installation for Linux 6



	<p>Title : EDT installation manual Document : Issue : 1.0.0 Classification : Public</p>	<p>Page : 3 Date : 17/11/2023</p>
---	--	--

1. Installation for Windows

Start the EDT installer (EDTpdv_5.5.x.x.exe) provided with your download (FliSdk or FirstLightVision).

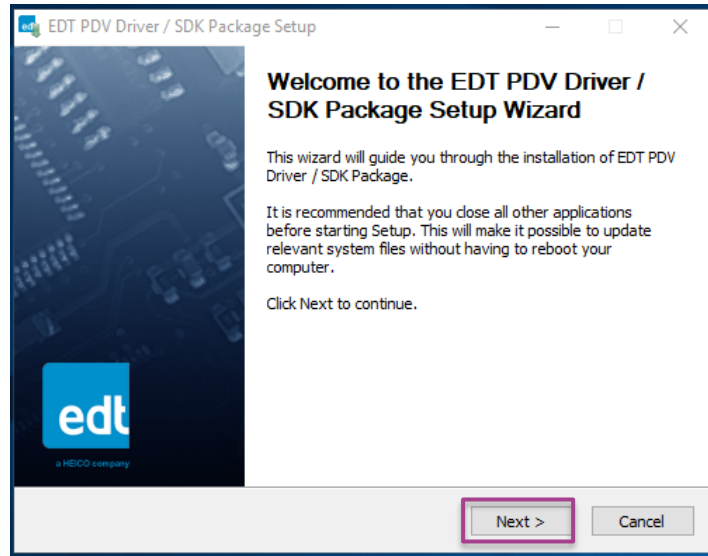


Fig. 1 : Installation directory selection

Click on *Next*,

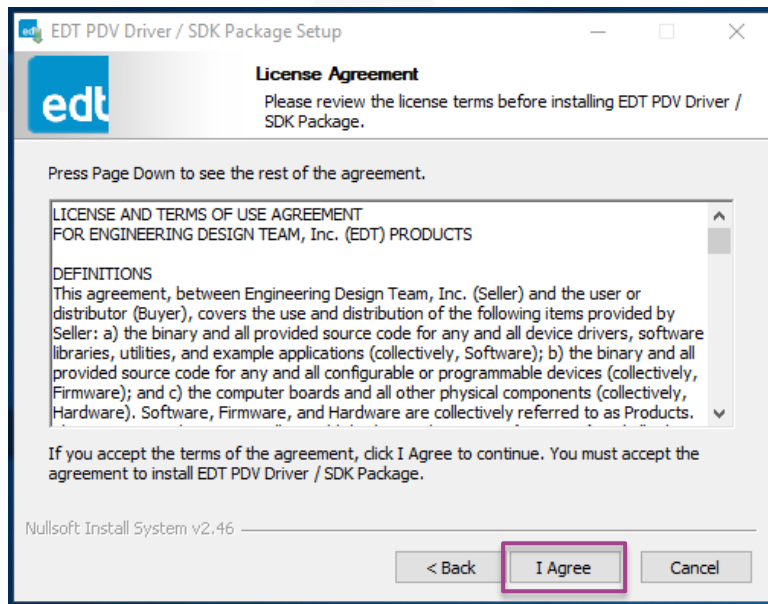



Fig. 2 : License Agreement

Read the license, and click on *I AGREE* to continue,

	<p>Title : EDT installation manual Document : Issue : 1.0.0 Classification : Public</p>	<p>Page : 4 Date : 17/11/2023</p>
---	--	--

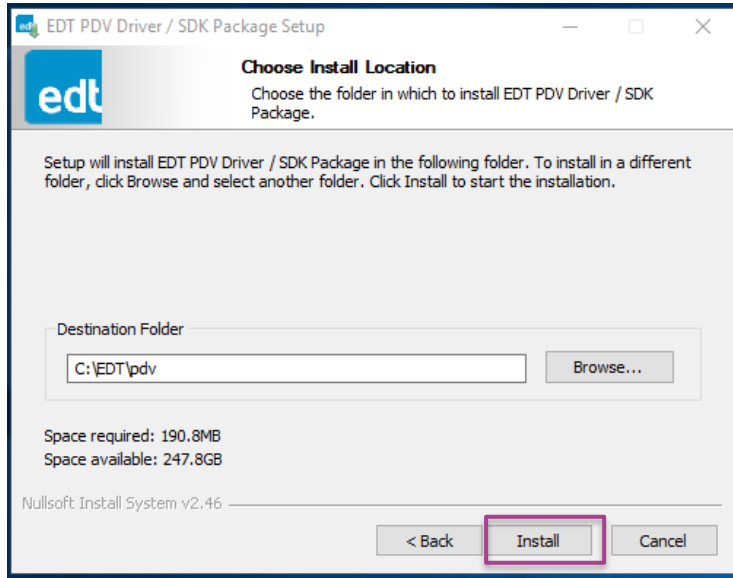


Fig. 3 : Installation directory selection

Click on *Install*,

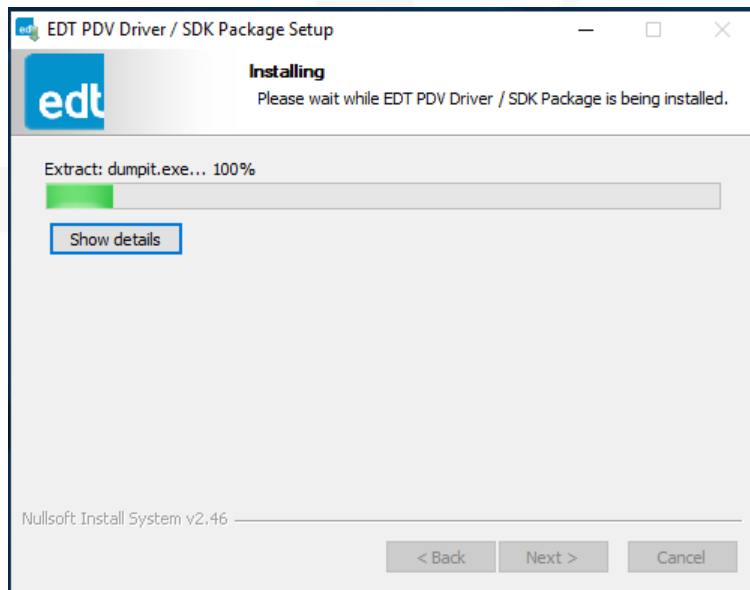



Fig. 4 : Installation progress window

At the end of the installation, the installer requests that you reboot the computer.

	Title : EDT installation manual Document : Issue : 1.0.0 Classification : Public	Page : 5 Date : 17/11/2023
---	---	-------------------------------

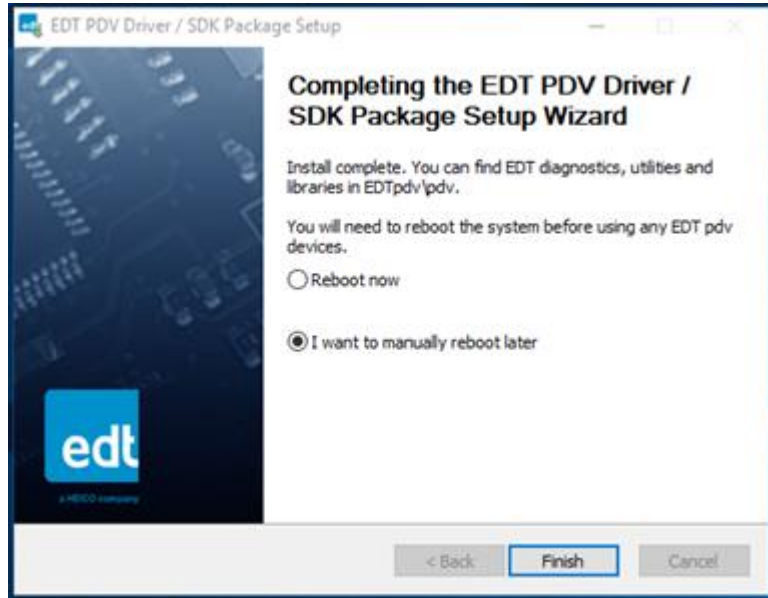



Fig. 5 : Restart popup

Select the option that is convenient for you: if you want to install another grabber, select reboot later, if not, select reboot now.

	Title : EDT installation manual Document : Issue : 1.0.0 Classification : Public	Page : 6 Date : 17/11/2023
---	---	-------------------------------

2. Installation for Linux

This installation has been tested on ubuntu 16.04 LTS kernel 4.4.0-140-generic and on ubuntu 18.04 LTS kernel 5.3.0-26-generic.

Start the EDT installer (EDTpdv_lnx_5.5.x.x.run) provided with your download (FliSdk or FirstLightVision).

```

jtugnoli@jtugnoli-desktop:~/Downloads$ sudo ./EDTpdv_lnx_5.6.2.0.run
Verifying archive integrity... All good.
Uncompressing EDT pdv Driver Package for Linux.....
Installing the EDT PDV software for Linux.

Note: for noninteractive install, you can specify the target directory as
a command-line argument, or '-- --default' for /opt/EDTpdv.

Target directory for source and executables? [/opt/EDTpdv] >
Copying files...

=====
=== Use of this software is subject to the Engineering Design Team, Inc. ===
=== terms of use. Read /opt/EDTpdv/EDTtermsOfUse.txt for details.      ===
=====

Setup output is being redirected to /opt/EDTpdv/install_pdv.log.


Please wait while setup installs the package...Setup complete
Installation complete. See /opt/EDTpdv/README.pdv for quick start and camera
setup information.

```

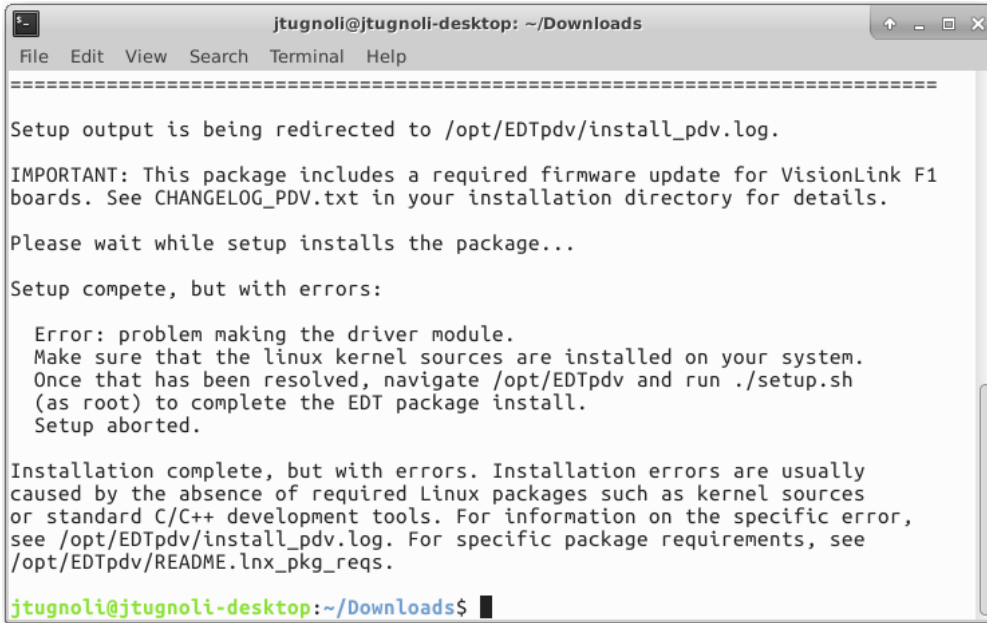
Fig. 6 : EDT redistributable extraction progress window

Press enter and the extraction will be done.

Press enter to close the window.

	Title : EDT installation manual Document : Issue : 1.0.0 Classification : Public	Page : 7 Date : 17/11/2023
---	---	-------------------------------

Note: If you have this error during the installation (it can occur depending on your kernel release):



```

=====
Setup output is being redirected to /opt/EDTpdv/install_pdv.log.

IMPORTANT: This package includes a required firmware update for VisionLink F1
boards. See CHANGELOG_PDV.txt in your installation directory for details.

Please wait while setup installs the package...

Setup complete, but with errors:

  Error: problem making the driver module.
  Make sure that the linux kernel sources are installed on your system.
  Once that has been resolved, navigate /opt/EDTpdv and run ./setup.sh
  (as root) to complete the EDT package install.
  Setup aborted.

Installation complete, but with errors. Installation errors are usually
caused by the absence of required Linux packages such as kernel sources
or standard C/C++ development tools. For information on the specific error,
see /opt/EDTpdv/install_pdv.log. For specific package requirements, see
/opt/EDTpdv/README.lnx_pkg_reqs.

jtugnoli@jtugnoli-desktop:~/Downloads$

```

Fig. 7 : EDT redistributable error message

Then go in EDT install directory (default is /opt/EDTpdv), go in directory “module” and with sudo edit the file “edt_lnx_mm.c”.

Look for the line

“rc = get_user_pages((unsigned long) useraddr, len, 0, pages, NULL);”

and replace it with this line

“rc = get_user_pages(current, current->mm, (unsigned long) useraddr, len, rw, pages, NULL);”

Save the file and run setup.sh in the install directory of EDT.