

HoloSpec Quick Start Guide

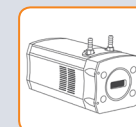


2 Unpacking the HoloSpec

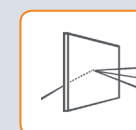
HoloSpec



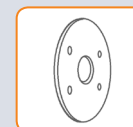
Spectrograph
Base Unit



Camera



Grating

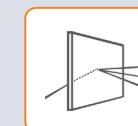


Detector Flange



Input Slit/ Fibre
Holder (SMA or FC)

Optional Accessories**



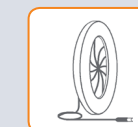
Grating(s)



Input/
Intermediate
Accessory Slit(s)



Notch Filter



Shutter

* F/1.8i models have integrated
Notch chamber and filter
** Standard and optional accessory
type and specification as ordered

User Guides and Documentation



Product Manuals
(On CD)



Quick Start
Guide



Camera
Software
(On CD)



Performance
Sheet

1 Preparing Your Facility



Handle the HoloSpec and accessories with care. The HoloSpec F/1.8 weighs 5.0 kg [11 lbs] and F/1.8i 8.2 kg [18 lbs].



Performing procedures, using controls, or adjusting the spectrograph other than as specified in the manual may result in hazardous radiation exposure.



Ensure sufficient clearance around cameras and power supply vents (Do **not** block vents when operating on benchtop).



Refer to the user manual for further information.



Keep dry, <80% humidity non-condensing.



Operate between 10°C and 40°C
Store between -20°C and 70°C.

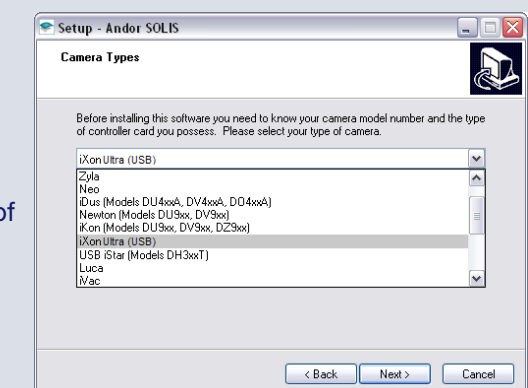
3 Installing Software (Solis or SDK)

You must have administrator access on your PC to perform this installation.

The same instructions cover the installation procedure for Andor's Solis or SDK software, which is used in conjunction with third party software. If you are planning to run your camera through a third party interface you will require the Andor Drivers, called SDK.

Switch on the PC, insert CD and run the **Solis (or SDK) setup.exe** file on the CD or download location.

- Confirm the version of software.
- Follow the on screen prompts.
- Select the installation directory when prompted.
- If prompted for camera type select the required camera.
- On the final window click on **"Install"**. During the installation a number of other windows will appear as various drivers are installed.
- To complete the installation, when prompted select "Yes, restart the computer now" and click on the finish button.



For more information visit: <http://www.andor.com/scientific-software>

4 Connecting your Camera and Accessories to the HoloSpec



Refer also to your camera user manual

The HoloSpec is supplied with camera, detector flange, grating and input slit pre-installed and aligned for ease of use.

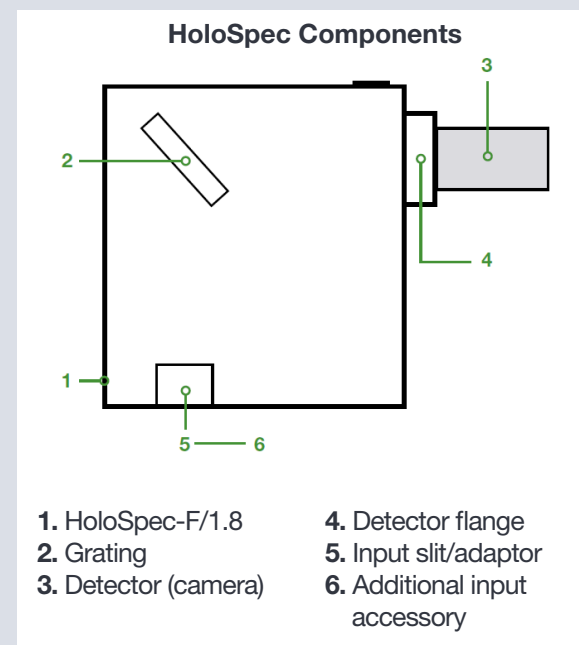
- If you need to install a different slit or grating accessory please refer to the HoloSpec User Guide for instructions.
- Do not adjust any lenses or components other than as described in the HoloSpec User Guide.

F/1.8i HoloSpec models

- F/1.8i HoloSpec models are fitted with an additional holographic notch filter.
- If you need to install a different notch filter please refer to the HoloSpec User Guide for instructions.

Adjustment of Camera Focus

- It is possible to adjust the focus of the camera, if required, using the camera focus thumbwheel on the HoloSpec.



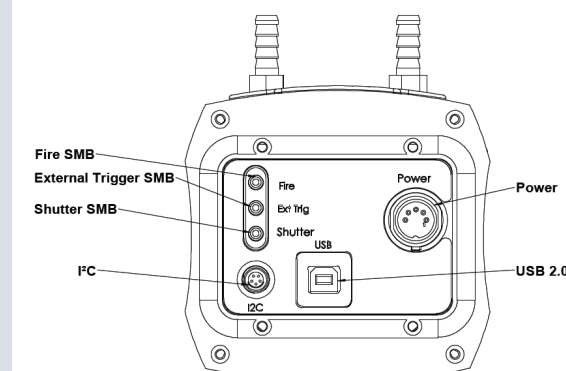
6 Connecting your Camera and Switching it on



Ensure that the Camera ON/OFF switch is in the OFF position AND your PC is switched OFF.

1. Insert the power cable from the power supply into the power connector at the rear of the camera. Secure in position using the screwlock.
2. Insert the mains cable into the camera power supply unit.
3. Connect the USB cable to the camera and an available USB port on the PC.
4. If a shutter is installed, connect the SMB to BNC trigger cable between the camera and the shutter driver.
5. Switch on the camera.
6. Start your software.
7. View and adjust the acquisition settings as required.
8. Start acquiring data.

Camera Rear Panel Connections



Above: Rear panel shown for Newton camera. Refer to camera User Guide. Connections may vary with camera model.

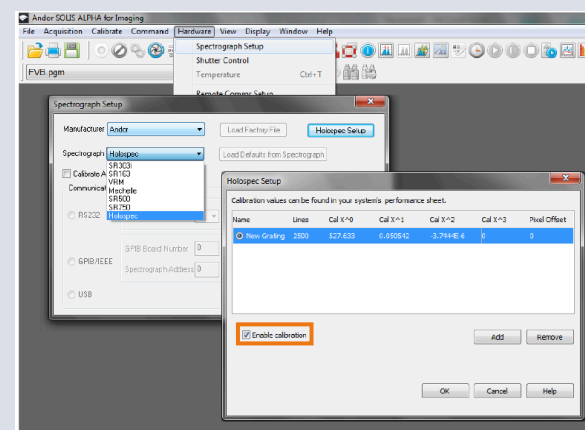
5 Setting up Solis for the HoloSpec



Refer also to your Solis software guide

Configuring Solis for the HoloSpec

1. Launch your Solis Software.
2. Navigate to **Hardware/Spectrograph Setup**.
3. Select “Andor” in the **Manufacturer** field.
4. Select “HoloSpec” in the **Spectrograph** field.
5. Click the **HoloSpec Setup** button.
6. Click **Add**, then enter the “calibration coefficients” that can be found on the supplied Performance Sheet.
7. Click the checkbox **Enable calibration**, then click **OK** on the grating and spectrograph dialogs to exit the setup menu.
8. Select your desired camera acquisition settings and take an acquisition – the calibration will be applied.



Additional Software Functions (See the HoloSpec Hardware Guide for details of these procedures)

- Small shifts in calibration can be accommodated using the pixel offset, found in the **HoloSpec Setup** dialog.
- A new calibration can be calculated easily using a calibration lamp and the **Calibrate/Manual X-Calibration** dialog.
- Units can be changed, e.g. from nanometers [nm] to Raman shift [cm⁻¹], in the **Calibrate/Change Units** dialog.



Troubleshooting

Camera is not recognized by PC

- Check that the camera power and USB cables are connected securely and the mains power cable is inserted.
- Check that the drivers have been installed properly (Control Panel /System/Hardware /Device Manager /Imaging Devices).



For additional troubleshooting information please refer to the user manual
For further technical information about the Andor HoloSpec go to: www.andor.com/spectrographs
You can find the latest user manuals on [MyAndor \(http://my.andor.com/login.aspx\)](http://my.andor.com/login.aspx)