

## ASCOM Driver Installation for Andor Cameras Using Maxim DL Software

*Applicable to Andor iXon Ultra / iKon-L / iKon-M*

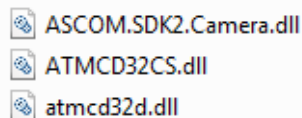
ASCOM is a plug and play control interface for astronomy software and hardware. Here we discuss the setup for ASCOM control of Andor CCD cameras from Andor Technology on Maxim DL software.

### Initial considerations


There are assumptions that the following has already been successfully installed:

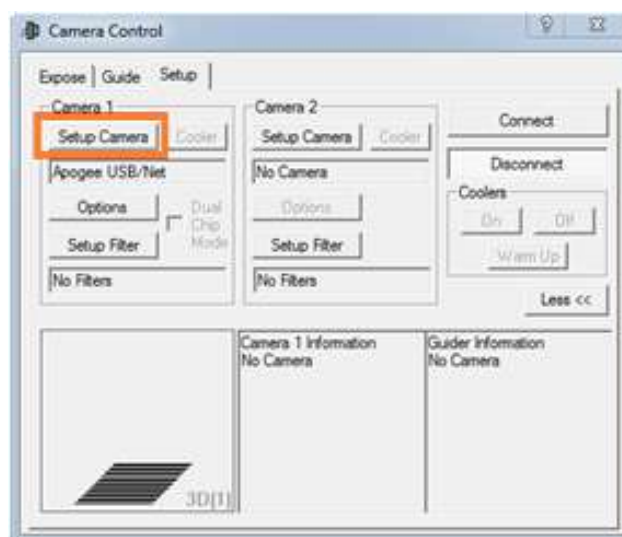
- Maxim DL software
- ASCOM platform <sup>[1]</sup>
- The current version of Andor SDK2 for ASCOM <sup>[2]</sup>

The Andor camera drivers for ASCOM will also need to be downloaded from the link: [Andor Drivers for ASCOM](#). Extract the following \*.dll files and copy to the ASCOM Common Files folder (default location: *C:\Program Files (x86)\Common Files\ASCOM\Camera folder*). Overwrite the 3 existing \*.dll files located in this folder.



### Setup

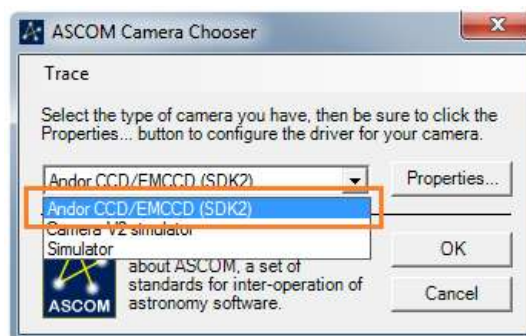
1. Start Maxim DL.
2. Open the Camera Control dialogue  and select *Setup Camera* from the *Setup* tab.



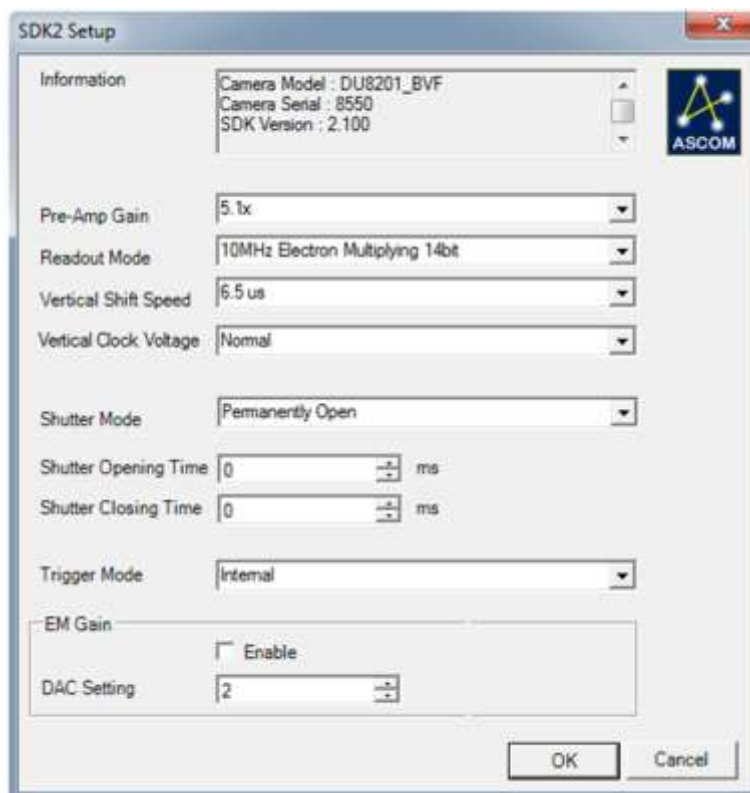
3. Select *ASCOM* from the *Camera Model* list and the *Advanced...* to setup ASCOM.



4. Set the camera type to *Andor CCD/EMCCD (SDK2)* from the dropdown menu.

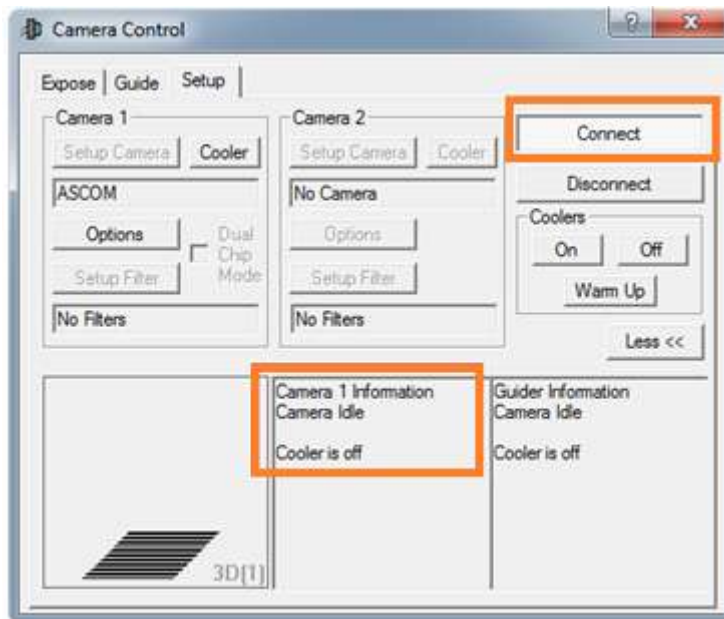


5. The *Properties* menu will display the *SDK2 Setup* window to configure the camera acquisition settings prior to connecting to the camera.

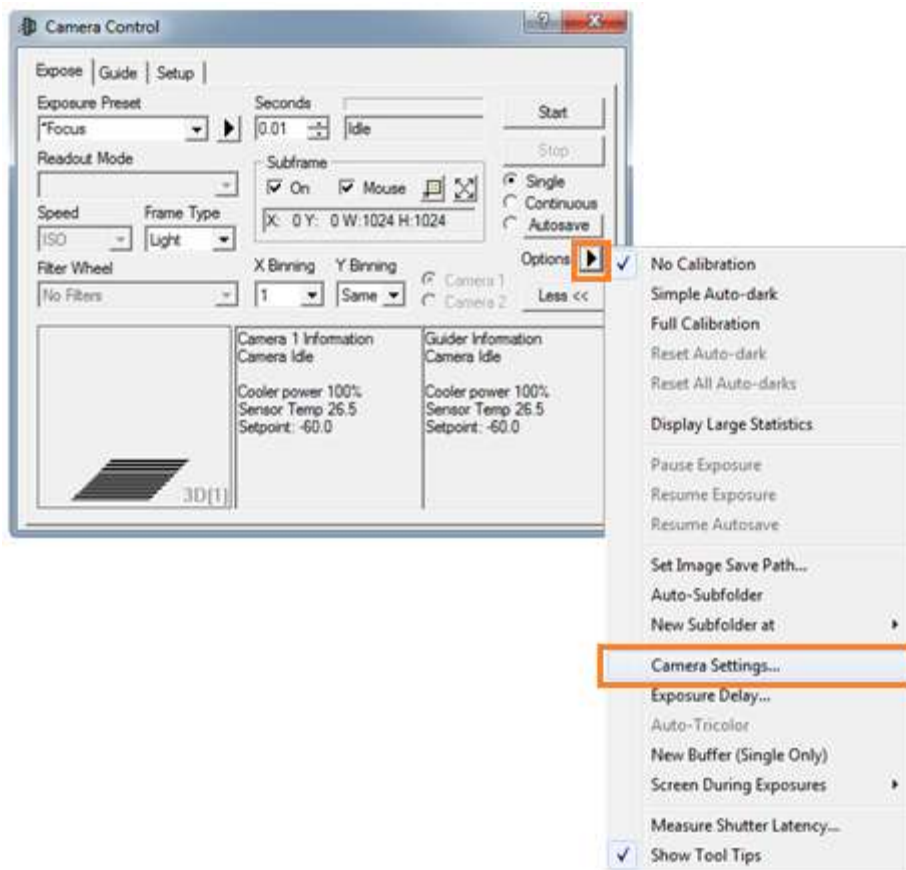


6. Press *OK* in the *SDK2 Setup*, the *ASCOM Camera Chooser* and the *Setup ASCOM* windows to finalise the setup.

7. Press the "Connect" button in the Setup tab of the *Camera Control* menu to connect to the camera. If the connection is successful the camera information text should change from "No Camera" to "Camera Idle".



When the camera is connected, the *SDK2 Setup* window can also be accessed from the *Options* menu on the Camera control window and selecting *Camera Settings...* from the drop down menu.



If you need further assistance, please contact your local Andor Support representatives <sup>[3]</sup>.

## Useful links

<sup>[1]</sup> ASCOM Website - <http://ascom-standards.org>

<sup>[2]</sup> Andor SDK2 for ASCOM from: <http://www.andor.com/ftp/20789/AndorSDK2%20Beta%20ASCOM%20Setup.zip>

<sup>[3]</sup> Product Support - <http://www.andor.com/ContactSupport>