

## Technical Solutions

### Configure SOLIS software to allow control of supported non-Andor spectrographs.

*Products Applicable* – All Andor cameras

*Software Applicable* – Andor SOLIS

This document will outline the procedure for configuring Andor SOLIS software to allow control of a supported non-Andor spectrograph.

- First, connect the spectrograph to the PC using a supported interface (in this example the RS232 interface will be used).

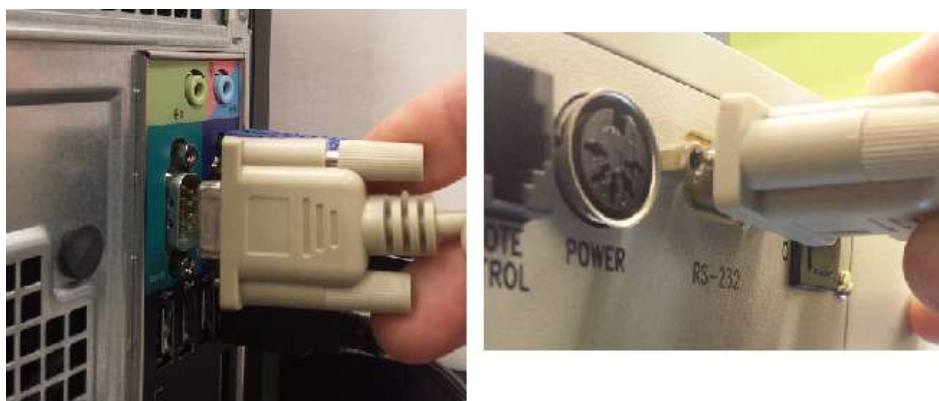


Figure 1 – RS232 cable being attached to both PC and spectrograph.

- Power on the PC and spectrograph.
- Start the Andor SOLIS software.
- Select *Hardware >> Setup Spectrograph* within the SOLIS menu bar.

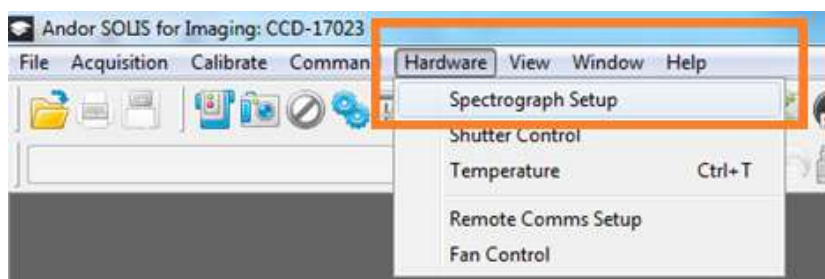


Figure 2

- Select the spectrograph manufacturer from the drop down menu in the *Setup Spectrograph* Window.

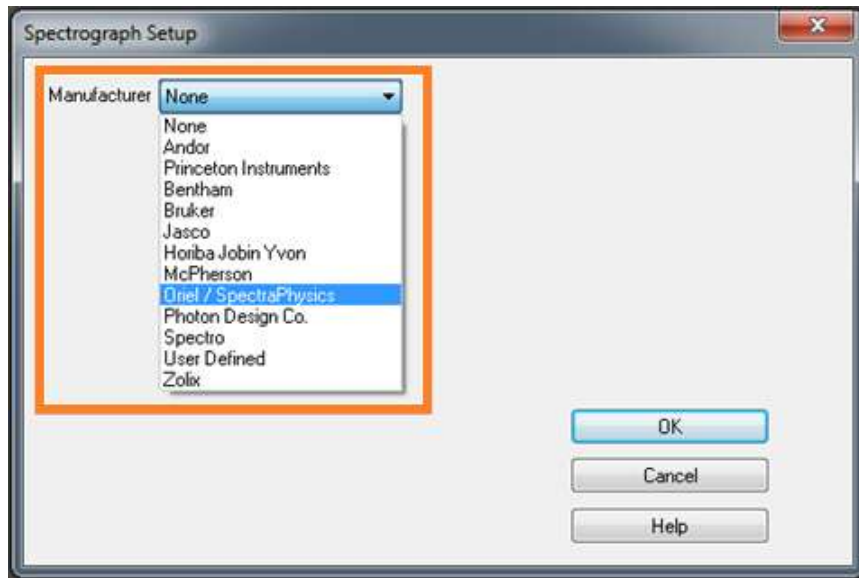


Figure 3

- Select the spectrograph model from the drop down menu.

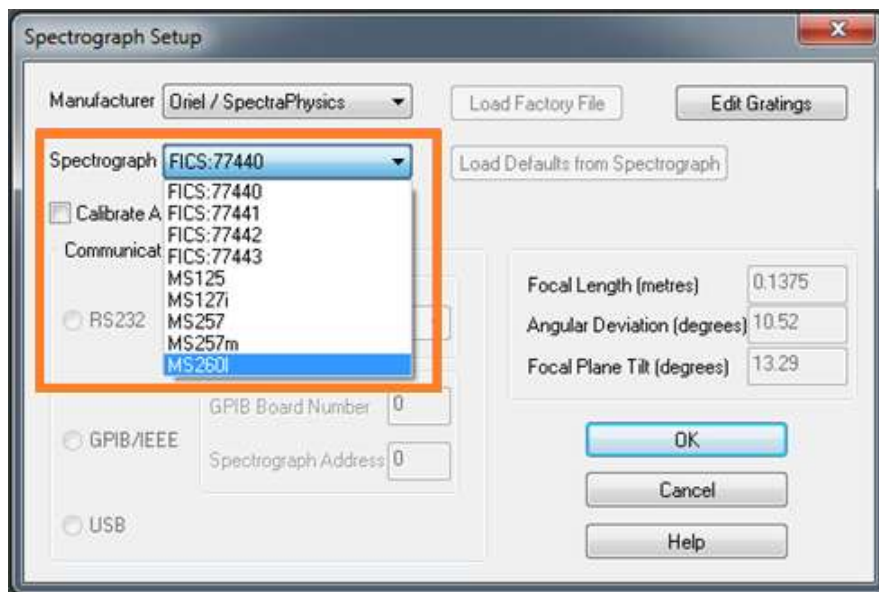


Figure 4

- Select the communication interface that you will be using and configure the interface settings (if applicable). Then select *Load Defaults from Spectrograph*.

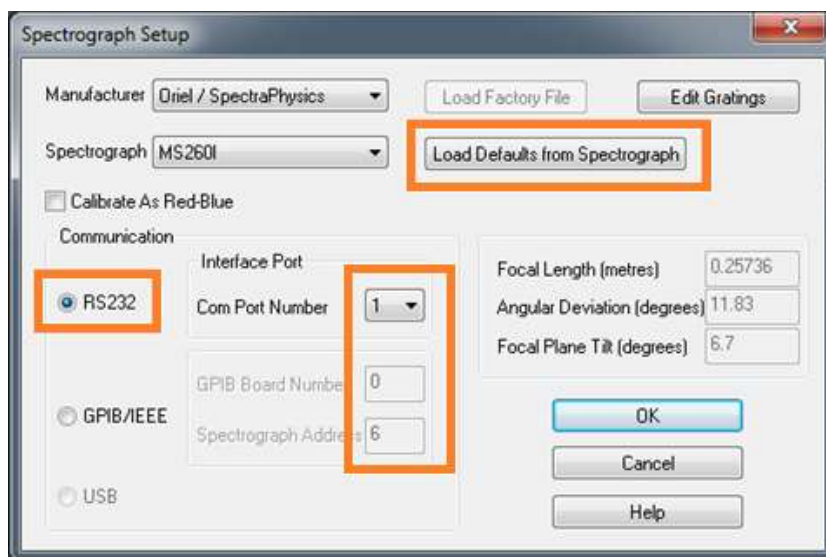


Figure 5

- A *Read Defaults* window should appear showing the communication has been established and that SOLIS has been able to read information from the spectrograph eg. grating configuration. Press *OK* to close the *Read Defaults* window and then *OK* in the *Spectrograph Setup* window.

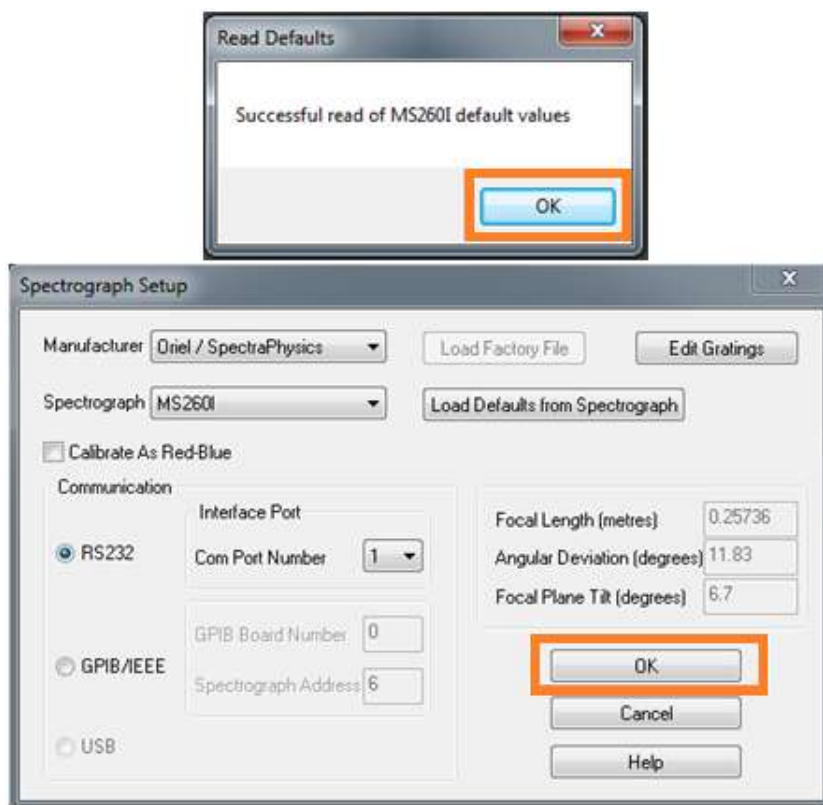


Figure 6

If you require any further assistance, please contact your local Andor Support Representative.