

## Technical Solutions

# Installation of SDK3 Labview for sCMOS

*Products Affected: Neo, Zyla*

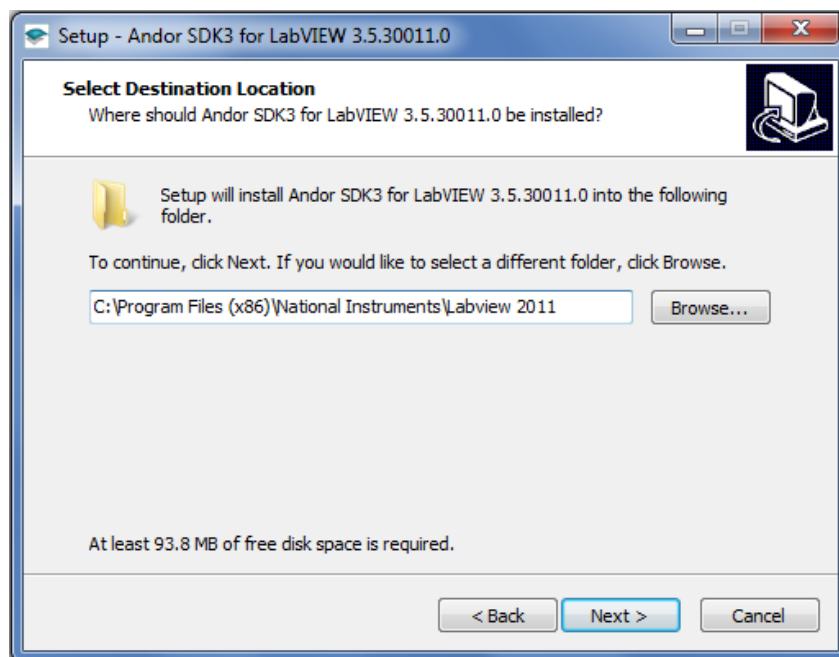
*Software Affected: Andor SDK3 for Labview*

The procedure for installing SDK3 for Labview sCMOS is quite specific in that the file path at the installation stage needs to be correct for the relevant files and libraries to be automatically installed to the correct locations.

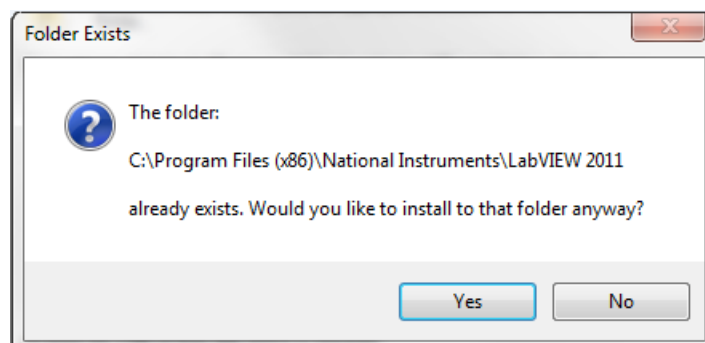
1. Run the SDK3 Labview Installer
2. When prompted, direct the destination location to:

C:\Program Files\National Instruments\LabVIEW 2011\                   for 64- bit Labview  
C:\Program Files(x86)\National Instruments\LabVIEW 2011\       for 32- bit Labview

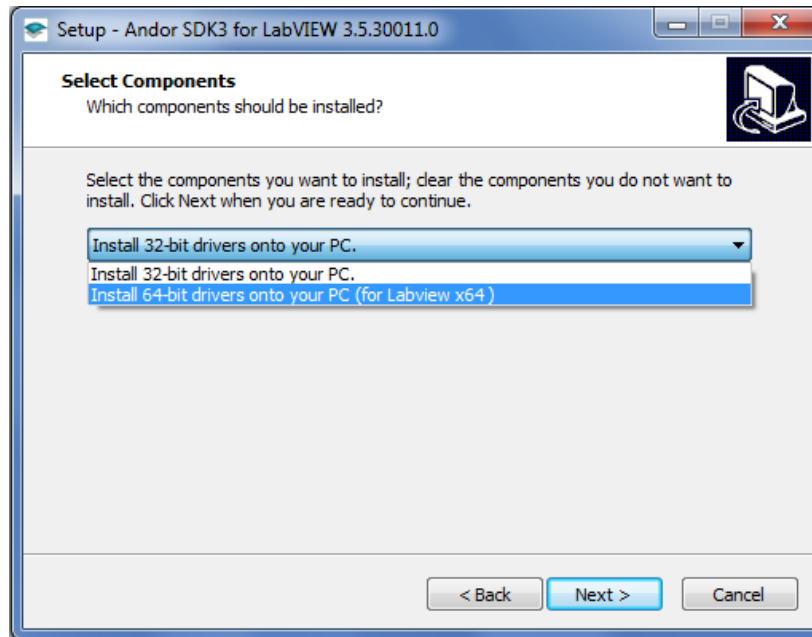
This will depend on the type of Labview used



3. A message will appear stating that this folder already exists. Click 'Yes'

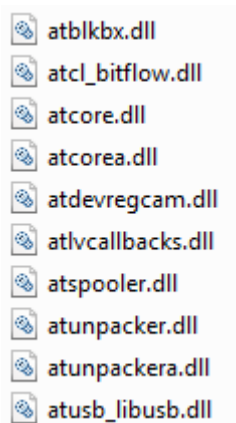


4. Select the appropriate drivers to install

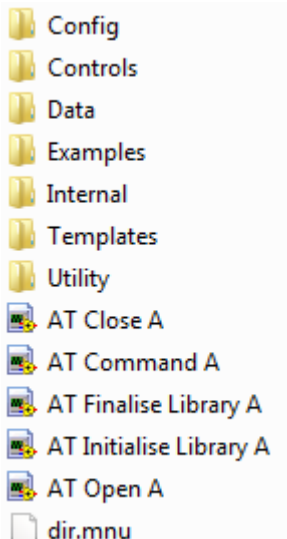


5. Continue the installation through to completion.

In the Labview Directory there should now be an Andor SDK3 folder plus the following .dll files:



In the C:\...\Labview\user.lib folder there should be another Andor SDK3 folder containing:



If for some reason the files are not automatically installed to the Labview directory, they may need to be moved separately. For example, if the SDK is installed before Labview is installed.

For further information, please refer to the Andor SDK3 for Labview document for on your SDK3 Installation CD.